



SABS
ISO 9001

BAIN MARIE TABLE MODEL

| MODEL | DESCRIPTION Bain Marie-Entry Level (Wet Element) | WEIGHT (kg) | DIMENSIONS (L X B X H) mm | POWER KW |
|-------------------|--|----------------|------------------------------|-------------|
| BM-4-TM2-0800065Z | Bain Marie Table Model 2 Div | 17,7 | 800x650x260 | 2 |
| BM-4-TM3-1145065Z | Bain Marie Table Model 3 Div | 25,4 | 1145x650x260 | 2 |
| BM-4-TM2-1450065Z | Bain Marie Table Model 4 Div | 31,8 | 1450x650x260 | 4 |
| BM-4-TM2-1750065Z | Bain Marie Table Model 5 Div | 38,4 | 1750x650x260 | 4 |

- Tank constructed with Grade 304 Stainless Steel
- Easy drain valve
- Heating element controlled by user friendly thermostat
- Easy to clean



SABS
ISO 9001

BAIN MARIE HOT CLOSET

| MODEL | DESCRIPTION Bain Marie-Entry Level (Wet Element) | WEIGHT (kg) | DIMENSIONS (L X B X H) mm | POWER KW |
|-------------------|--|----------------|------------------------------|-------------|
| BM-4-HC2-0800065Z | Bain Marie Hot Closet 2 Div | 55 | 800x650x900 | 3 |
| BM-4-HC3-1205065Z | Bain Marie Hot Closet 3 Div | 65,8 | 1200x650x900 | 3 |
| BM-4-HC4-1450065Z | Bain Marie Hot Closet 4 Div | 99,2 | 1450x650x900 | 5 |
| BM-4-HC5-175565Z | Bain Marie Hot Closet 5 Div | 112 | 1755x650x900 | 5 |

- Tank constructed with Grade 304 Stainless Steel
- Top Hanging Sliding doors
- Separate electric components for tank and closet
- Shelf for extra storage



SABS
ISO 9001

CARVERY UNIT

| MODEL | DESCRIPTION Carvery Unit | WEIGHT (kg) | DIMENSIONS (L X B X H) mm | POWER KW |
|-------|-----------------------------|----------------|------------------------------|-------------|
| CU | Carvery Unit | 65.2 | 705x540x800 | 2 |

- Heating element controlled by user friendly thermostat
- Curved glass sneeze guard is optional



SABS
ISO 9001

CHIP FRYER

| MODEL | DESCRIPTION Turbo Fryer Electric | WEIGHT (kg) | DIMENSIONS (L X B X H) mm | POWER KW |
|-------------|-------------------------------------|----------------|------------------------------|-------------|
| FRE-4-S-20L | Electric Turbo Fryer Single 20L | 40 | 500x650x900 | 16 |
| FRE-4-D-10L | Electric Turbo Fryer Double 10L | 51,6 | 500x650x900 | 18 |
| FRE-4-D-20L | Electric Turbo Fryer Double 20L | 64 | 1000x650x900 | 32 |

- Constructed with Stainless Steel
- Temperature range 0-190 degrees
- Safety 210 degree thermostat with reset button
- Hanger for baskets
- Includes one 20 litre oil bin per tank

FLAT TOP ELECTRIC

| MODEL | DESCRIPTION | WEIGHT | DIMENSIONS | POWER |
|-----------------|---|--------|----------------|-------|
| | Flat Top Grill | (kg) | (L X B X H) mm | KW |
| FTGFSE-4-060730 | Electric Flat Top Grill-Free Standing-5Kw | 74,2 | 600x730x900 | 5 |
| FTGFSE-4-090730 | Electric Flat Top Grill-Free Standing | 110 | 900x730x900 | 10 |
| MODEL | DESCRIPTION | WEIGHT | DIMENSIONS | POWER |
| | Flat Top Grill - Table Model | (kg) | (L X B X H) mm | KW |
| FTGTM-4-060650 | Electric Flat Top Grill-Table Model | 65 | 600x650x300 | 5 |
| FTGTM-4-090650 | Electric Flat Top Grill-Table Model | 90 | 900x650x300 | 10 |

- 16mm flat cooking top for heat retention
- Table Model comes with 12mm cooking top
- Splash back and sides
- Hinged top
- Temperature range 0-180 degrees
- Mobile on castors
- Extras are dividers, ribbed and lid

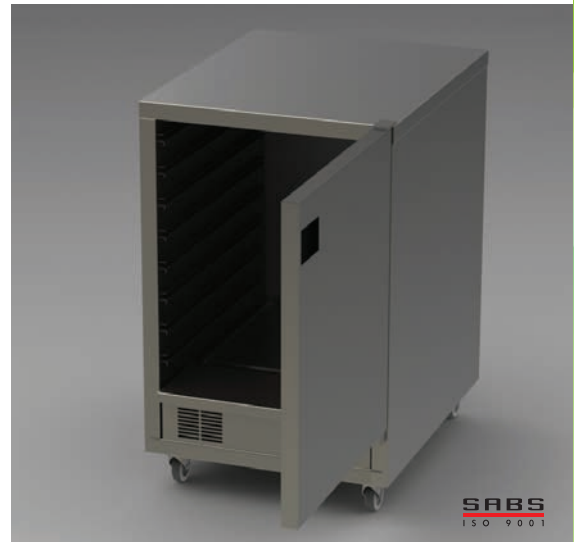


ELECTRIC RANGE

HOT HOLDING CABINET

| MODEL | DESCRIPTION | WEIGHT | DIMENSIONS | POWER |
|---------------|---------------------------------------|--------|----------------|-------|
| | (Hot Holding Cabinet) | (kg) | (L X B X H) mm | KW |
| HHC-4-1SD | Hot Holding Cabinet with 1 Swing Door | 40 | 420x690x665 | 1 |
| FWC-4-8GN2/1 | Food Warming Cabinet 8 GN2/1 | 76,7 | 625x800x1000 | 1 |
| FWC-4-16GN2/1 | Food Warming Cabinet 16 GN2/1 | 114,7 | 625x800x1790 | 2 |

- Constructed with Stainless Steel
- Hinged doors left to right
- Designed to fit GN trays
- Temperature range 0-90 degrees
- Mobile on castors

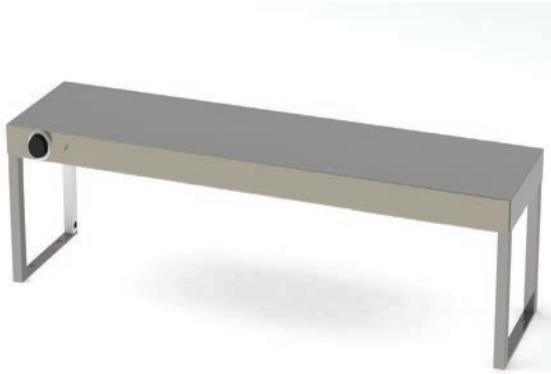


HOT CLOSET

| MODEL | DESCRIPTION | WEIGHT | DIMENSIONS | POWER |
|----------------|-------------------------------|--------|----------------|-------|
| | Hot Closet Cabinet (Electric) | (kg) | (L X B X H) mm | KW |
| CA-HC-4-080065 | Hot Closet | 65 | 800x650x810 | 1 |
| CA-HC-4-120065 | Hot Closet | 85 | 1200x650x810 | 1 |
| CA-HC-4-180065 | Hot Closet | 122 | 1800x650x810 | 2 |

- Constructed with Stainless Steel
- Top hanging sliding doors
- Shelf for extra storage space
- Temperature controlled between 0-90 degrees





SABS
ISO 9001



SABS
ISO 9001

HOT PASS

| MODEL | DESCRIPTION Hot Pass (Electric) | WEIGHT (kg) | DIMENSIONS (L X B X H) mm | POWER KW |
|----------------|---------------------------------------|----------------|------------------------------|-------------|
| PA-4-1T-800-H | Hot Pass 1 Tier | 8 | 800x300x315 | 1 |
| PA-4-1T-1200-H | Hot Pass 1 Tier | 9 | 1200x300x315 | 1 |
| PA-4-1T-1450-H | Hot Pass 1 Tier | 10 | 1450x300x315 | 1 |
| PA-4-1T-1800-H | Hot Pass 1 Tier | 9 | 1800x300x315 | 2 |
| PA-4-1T-2400-H | Hot Pass 1 Tier | 12 | 2400x300x315 | 2,5 |
| PA-4-2T-800-H | Hot Pass 2 Tier Top Tier Heated | 12 | 800x300x315 | 1 |
| PA-4-2T-1200-H | Hot Pass 2 Tier Top Tier Heated | 12 | 1200x300x315 | 1 |
| PA-4-2T-1450-H | Hot Pass 2 Tier Top Tier Heated | 14 | 1450x300x315 | 1 |
| PA-4-2T-1800-H | Hot Pass 2 Tier Top Tier Heated | 21 | 1800x300x315 | 2 |
| PA-4-2T-2400-H | Hot Pass 2 Tier Top Tier Heated | 25 | 2400x300x315 | 2,5 |

- Constructed with Stainless Steel
- Special Stick elements used for standard range
- Available with Infra-Red energy efficient heating bulbs
- Surface temperatures of up to 70 degrees depending on ambient temperature
- Available in 3 and 4 Tier
- Available with smart pass feature using motion sensors to activate elements



SABS
ISO 9001

HOT PLATE DROP IN TABLE

| MODEL | DESCRIPTION Hot Plate Drop In Table Model | WEIGHT (kg) | DIMENSIONS (L X B X H) mm | POWER KW |
|--------------|---|----------------|------------------------------|-------------|
| HPH-4-2Plate | Hot Plate Holder Table Model - 2 Plate | 61,8 | 820x650 | 2 |
| HPH-4-3Plate | Hot Plate Holder Table Model - 3 Plate | 92 | 1220x650 | 3 |
| HPH-4-4Plate | Hot Plate Holder Table Model - 4 Plate | 114,6 | 1520x600 | 4 |
| HPH-4-5Plate | Hot Plate Holder Table Model - 5 Plate | 135,8 | 1800x600 | 5 |

- Body constructed with 430 Stainless Steel
- Easy to use hot plate
- Energy efficient
- Curved glass sneeze guard is optional



SABS
ISO 9001

SALAMANDER

| MODEL | DESCRIPTION Salamander Electric | WEIGHT (kg) | DIMENSIONS (L X B X H) mm | POWER KW |
|----------------|------------------------------------|----------------|------------------------------|-------------|
| Nim-Salamander | Salamander Electric | 35 | 790x400x390 | 4 |

- Constructed with Stainless Steel
- Quick heating
- Adjustable