

## BOILING TABLE

MODEL	DESCRIPTION Boiling Tables	WEIGHT (kg)	DIMENSIONS (L X B X H) mm	HEAT BTU
BT-44-2B	Gas Boiling Table S/S - 2 Burner	21	450x700x900	92 160
BT-44-4B	Gas Boiling Table S/S - 4 Burner	26	700x800x900	184 320
BT-44-4BST	Gas Boiling Table S/S - 4 Burner Staggered	30	880x800x900	184 320
BT-44-6B	Gas Boiling Table S/S - 6 Burner	32	1050x800x900	276 480
BT-44-6BST	Gas Boiling Table S/S - 6 Burner Staggered	36	1230x800x900	276 480

- LPGSA Certified
- 304 Stainless Steel Plate Assembly
- Uses LPG or Natural Gas
- Stainless Steel Drip Tray



## FLAT TOP GRIDDLE

MODEL	DESCRIPTION Gas Flat Top Grill 3 Burner- Freestanding	WEIGHT (kg)	DIMENSIONS (L X B X H) mm	HEAT BTU
FTGFSG3-060730	Gas Flat Top Grill 3 Burner- Freestanding	72	600x730x900	45 000
FTGFSG3-090730	Gas Flat Top Grill 5 Burner- Freestanding	110	900x730x900	75 000

MODEL	DESCRIPTION Gas Flat Top Grill 3 Burner- Table Model	WEIGHT (kg)	DIMENSIONS (L X B X H) mm	HEAT BTU
FTGTM-4-060650	Gas Flat Top Grill 3 Burner - Table Model	52	600x650x300	45 000
FTGTM-4-090650	Gas Flat Top Grill 5 Burner - Table Model	78	900x650x300	75 000

- LPGSA Certified
- Body constructed with Stainless Steel
- 16mm Flat Top Griddle
- Table Model comes with 12mm cooking top
- Uses LPG or Natural Gas
- Extras are dividers, ribbed and lid
- Easy to pull out drip tray to catch fats

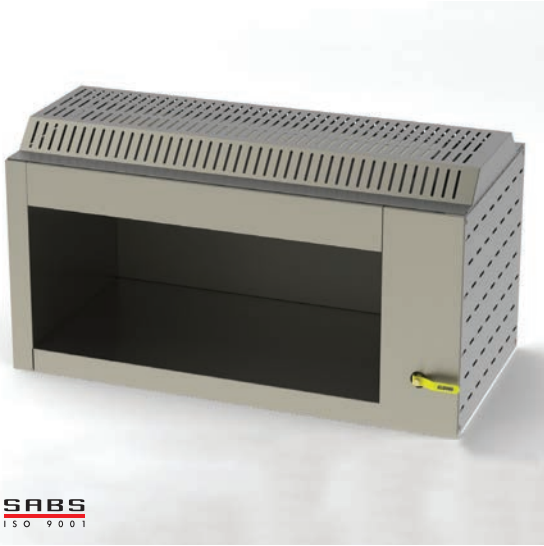


## GAS GRILL RADIANT

MODEL	DESCRIPTION Boiling Tables	WEIGHT (kg)	DIMENSIONS (L X B X H) mm	HEAT BTU
RGFS-44-4B-070650	Gas Radiant Grill Free Standing - 4 Burner	39	700x650x900	60 000
RGFS-44-6B-086650	Gas Radiant Grill Free Standing - 6 Burner	51	860x650x900	90 000
RGFS-44-8B-110650	Gas Radiant Grill Free Standing - 8 Burner	53	1100x650x900	120 000
RGFS-44-10B-135650	Gas Radiant Grill Free Standing - 10 Burner	63	1350x650x900	150 000
RGFS-44-12B-160650	Gas Radiant Grill Free Standing - 12 Burner	75	1600x650x901	180 000

- LPGSA Certified
- Constructed with Stainless Steel
- Drip Tray to catch fats
- Uses LPG or Natural Gas
- Vents in sheet metal for better flame quality
- Also available in Table Model



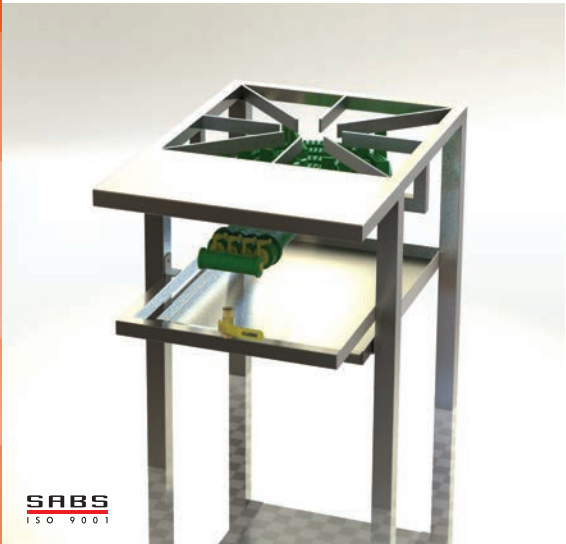


**SABS**  
ISO 9001

### SALAMANDER

MODEL	DESCRIPTION	WEIGHT	DIMENSIONS	HEAT
	Salamander	(kg)	(L X B X H) mm	BTU
SAL-4-GAS	Gas Salamander	59.2	900 x 450 x 580	25000

- Constructed with Stainless Steel
- Quick heating
- Drip Tray to catch fats
- Uses LPG or Natural Gas
- Vents in sheet metal for better flame quality



**SABS**  
ISO 9001

### STOCK POT BOILING TABLE

MODEL	DESCRIPTION	WEIGHT	DIMENSIONS	HEAT
	Stock Pot Boiling Table	(kg)	(L X B X H) mm	BTU
SPBT-44-1B	Gas Stock Pot Boiling Table - 1 Burner	27	500x700x500	92 160
SPBT-44-2B	Gas Stock Pot Boiling Table - 2 Burner	42,6	1000x700x500	184 320
SPBT-44-3B	Gas Stock Pot Boiling Table - 3 Burner	64	1500x700x500	276 480

- 304 Stainless Steel Plate Assembly
- Robust Design
- Uses LPG or Natural Gas
- Stainless Steel Drip Tray



**SABS**  
ISO 9001

### WOK BOILING TABLE

MODEL	DESCRIPTION	WEIGHT	DIMENSIONS	HEAT
	Woks	(kg)	(L X B X H) mm	BTU
WOK 1B 900	Gas 1 Burner Wok Water Cooled (HP)	67	900x850x815	92 160
WOK 3B 1800	Gas 3 Burner Wok Water Cooled (HP x 2/LP x1)	122	1800x850x815	276 480
WOK 5B 2400	Gas 5 Burner Wok Water Cooled (HP x 4/LP x1)	163	2400x850x815	460 800

- Uses LPG on high pressure regulator/line
- Water Cooled Top
- Constructed with 304 Stainless Steel
- High splash back