



REFRIGERATION & CATERING EQUIPMENT
MANUFACTURERS



PRODUCT CATALOGUE
2018

We design, manufacture and supply refrigeration and catering equipment for some of the top names in food retailing, catering and hospitality.

We've been growing our client base since 1993. But while we look back at our track record with pride, our focus is forward directed: on long-term client relations and building a sustainable future.

At Metnor, we know how critical it is to stay on the cutting edge of stainless steel design and fabrication. That is why we invest in the most up-to-date design software and hardware. For instance, we use the latest in Computer Numeric Control (CNC) Amada punching and bending machines to manufacture to precise tolerances and client specifications.

Our solutions are often highly innovative. These include material handling products, trolleys, bakery racks and storage and display equipment, particularly in stainless steel.

We also manufacture a range of other stock and bespoke stainless steel products. These can be as varied as your individual needs - from mobile chef demo units to drinks dispensers and even office furniture.

Besides our renowned stainless steel catering and food industry equipment, we also offer a range of general manufacturing services and facilities.

Our team of qualified engineers and designers also offers a full range of design solutions to meet our customers needs.

ELECTRIC RANGE	Page
Bain Marie	1
Chip Fryer	1
Flat Top Griddle	2
Hot Holding Cabinet	2
Hot Closet	2
Hot Pass	2
Salamander	3
Sandwich Chute	3
GAS RANGE	
Boiling Table	4
Flat Top Griddle	4
Gas Grill Radiant	4
Salamander	5
Stock Pot Boiling Table	5
WOK Boiling Table	5
REFRIGERATION	
Stainless Steel Door Underbar	6
Glass Door Underbar	7
Gastronorm Underbar	8
Pizzaback Underbar	9
Polar Top Underbar	9
Slide Top Underbar	10
Hampers Underbar	10
Ice Bin	10
STRUCTURAL	
Cabinets	
Sliding Door Cabinet	11
Neutral Cabinet	11
Shelving	
General Shelving	12
Shelving Pot Rack	12
Shelving Wall Mounted	12
Riser shelf	13
Sinks	
Preparation Sinks	13
Pot Sinks	13
Veg Prep Sinks (Combination)	14
Hand Wash Basins	14
Tables	
Table-Plain Top	14
Table - Splash Back	15
Hoyings Table	15
Dump Tables	16
Inlet Tables	16
Outlet Tables	17
Jockey Station Table	17
Trolleys	
General Purpose Trolley	17
Blood Crate Trolley	17
GN Trolley Trolley	17
Tuff Tray Trolley	17
Mobile Dolley Trolley	17
General	
Grease Traps	18
Ice Wells	18
Glass Washer Station (Inlet sink and Outlet Table)	18
Glass Washer Stand with Runners	18
Dishwasher Single Basket Rack under to take 3 Baskets	18
Dishwasher Double Basket Rack undet to take 6 Basket	18
Oven Stand S/S with Top (Combi Steam)	18



SABS
ISO 9001

BAIN MARIE TABLE MODEL

MODEL	DESCRIPTION Bain Marie-Entry Level (Wet Element)	WEIGHT (kg)	DIMENSIONS (L X B X H) mm	POWER KW
BM-4-TM2-0800065Z	Bain Marie Table Model 2 Div	17,7	800x650x260	2
BM-4-TM3-1145065Z	Bain Marie Table Model 3 Div	25,4	1145x650x260	2
BM-4-TM2-1450065Z	Bain Marie Table Model 4 Div	31,8	1450x650x260	4
BM-4-TM2-1750065Z	Bain Marie Table Model 5 Div	38,4	1750x650x260	4

- Tank constructed with Grade 304 Stainless Steel
- Easy drain valve
- Heating element controlled by user friendly thermostat
- Easy to clean



SABS
ISO 9001

BAIN MARIE HOT CLOSET

MODEL	DESCRIPTION Bain Marie-Entry Level (Wet Element)	WEIGHT (kg)	DIMENSIONS (L X B X H) mm	POWER KW
BM-4-HC2-0800065Z	Bain Marie Hot Closet 2 Div	55	800x650x900	3
BM-4-HC3-1205065Z	Bain Marie Hot Closet 3 Div	65,8	1145x650x900	3
BM-4-HC4-1450065Z	Bain Marie Hot Closet 4 Div	99,2	1450x650x900	5
BM-4-HC5-175565Z	Bain Marie Hot Closet 5 Div	112	1755x650x900	5

- Tank constructed with Grade 304 Stainless Steel
- Top Hanging Sliding doors
- Separate electric components for tank and closet
- Shelf for extra storage



SABS
ISO 9001

CHIP FRYER

MODEL	DESCRIPTION Turbo Fryer Electric	WEIGHT (kg)	DIMENSIONS (L X B X H) mm	POWER
FRE-4-S-20L	Electric Turbo Fryer Single 20L	40	500x650x900	16
FRE-4-D-10L	Electric Turbo Fryer Double 10L	51,6	500x650x900	18
FRE-4-D-20L	Electric Turbo Fryer Double 20L	64	1000x650x900	32

- Constructed with Stainless Steel
- Temperature range 0-190 degrees
- Safety 210 degree thermostat with reset button
- Hanger for baskets
- Includes one 20 litre oil bin per tank

FLAT TOP ELECTRIC

MODEL	DESCRIPTION	WEIGHT	DIMENSIONS	POWER
	Flat Top Grill	(kg)	(L X B X H) mm	KW
FTGFSE-4-060730	Electric Flat Top Grill-Free Standing-5Kw	74,2	600x730x900	5
FTGFSE-4-090730	Electric Flat Top Grill-Free Standing	110	900x730x900	10
MODEL	DESCRIPTION	WEIGHT	DIMENSIONS	POWER
	Flat Top Grill - Table Model	(kg)	(L X B X H) mm	KW
FTGTM-4-060650	Electric Flat Top Grill-Table Model	65	600x650x300	5
FTGTM-4-090650	Electric Flat Top Grill-Table Model	90	900x650x300	10

- 16mm flat cooking top for heat retention
- Table Model comes with 12mm cooking top
- Splash back and sides
- Hinged top
- Temperature range 0-180 degrees
- Mobile on castors
- Extras are dividers, ribbed and lid



ELECTRIC RANGE

HOT HOLDING CABINET

MODEL	DESCRIPTION	WEIGHT	DIMENSIONS	POWER
	(Hot Holding Cabinet)	(kg)	(L X B X H) mm	KW
HHC-4-1SD	Hot Holding Cabinet with 1 Swing Door	40	420x690x665	1
FWC-4-8GN2/1	Food Warming Cabinet 8 GN2/1	76,7	625x800x1000	1
FWC-4-16GN2/1	Food Warming Cabinet 16 GN2/1	114,7	625x800x1790	2

- Constructed with Stainless Steel
- Hinged doors left to right
- Designed to fit GN trays
- Temperature range 0-90 degrees
- Mobile on castors



HOT CLOSET

MODEL	DESCRIPTION	WEIGHT	DIMENSIONS	POWER
	Hot Closet Cabinet (Electric)	(kg)	(L X B X H) mm	KW
CA-HC-4-080065	Hot Closet	65	800x650x900	1
CA-HC-4-120065	Hot Closet	85	1200x650x900	1
CA-HC-4-180065	Hot Closet	122	1800x650x900	2

- Constructed with Stainless Steel
- Top hanging sliding doors
- Shelf for extra storage space
- Temperature controlled between 0-90 degrees



HOT PASS

MODEL	DESCRIPTION Hot Pass (Electric)	WEIGHT (kg)	DIMENSIONS (L X B X H) mm	POWER KW
PA-4-F1PM	Hot Pass Figure 1	N/A	Per metre	N/A
PA-4-F2PM	Hot Pass Figure 2	N/A	Per metre	N/A
PA-4-F3PM	Hot Pass Figure 3	N/A	Per metre	N/A
PA-4-F4PM	Hot Pass Figure 4	N/A	Per metre	N/A
PA-4-F5PM	Hot Pass Figure 5	N/A	Per metre	N/A
PA-4-F6PM	Hot Pass Figure 6	N/A	Per metre	N/A

- Constructed with Stainless Steel
- Special Stick elements used for standard range
- Available with Infra-Red energy efficient heating bulbs
- Surface temperatures of up to 70 degrees depending on ambient temperature
- Available in 3 and 4 Tier
- Available with smart pass feature using motion sensors to activate elements

SABS
ISO 9001

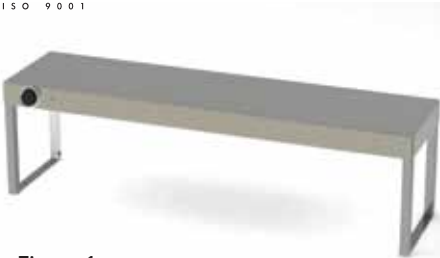


Figure 1



Figure 2



Figure 3

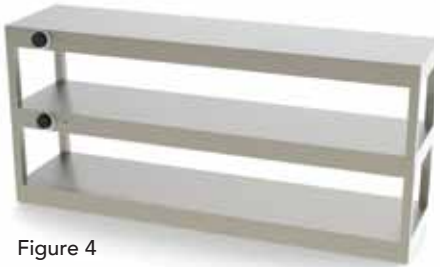


Figure 4



Figure 5



Figure 6



SABS
ISO 9001

SALAMANDER

MODEL	DESCRIPTION Salamander Electric	WEIGHT (kg)	DIMENSIONS (L X B X H) mm	POWER KW
Nim-Salamander	Salamander Electric	35	790x400x390	4

- Constructed with Stainless Steel
- Quick heating
- Adjustable

SANDWICH CHUTE

MODEL	DESCRIPTION Salamander Electric	WEIGHT (kg)	DIMENSIONS (L X B X H) mm	POWER KW
Sandchute-1150	Sandwich Chute	55	1150x600x740	4

- Constructed from stainless steel
- Infra-red lights to keep packages warm
- Angled chute
- Fits into hatches

SABS
ISO 9001

BOILING TABLE

MODEL	DESCRIPTION Boiling Tables	WEIGHT (kg)	DIMENSIONS (L X B X H) mm	HEAT BTU
BT-44-2B	Gas Boiling Table S/S - 2 Burner	21	450x700x900	40 000
BT-44-4B	Gas Boiling Table S/S - 4 Burner	26	700x800x900	80 000
BT-44-4BST	Gas Boiling Table S/S - 4 Burner Staggered	30	880x800x900	80 000
BT-44-6B	Gas Boiling Table S/S - 6 Burner	32	1050x800x900	120 000
BT-44-6BST	Gas Boiling Table S/S - 6 Burner Staggered	36	1230x800x900	120 000

- LPGSA Certified
- 304 Stainless Steel Plate Assembly
- Uses LPG or Natural Gas
- Stainless Steel Drip Tray



GAS RANGE

FLAT TOP GRIDDLE

MODEL	DESCRIPTION Gas Flat Top Grill 3 Burner- Freestanding	WEIGHT (kg)	DIMENSIONS (L X B X H) mm	HEAT BTU
FTGFSG3-060730	Gas Flat Top Grill 3 Burner- Freestanding	72	600x730x900	60 000
FTGFSG3-090730	Gas Flat Top Grill 5 Burner- Freestanding	110	900x730x900	100 000

MODEL	DESCRIPTION Gas Flat Top Grill 3 Burner- Table Model	WEIGHT (kg)	DIMENSIONS (L X B X H) mm	HEAT BTU
FTGTM-4-060650	Gas Flat Top Grill 3 Burner - Table Model	52	600x650x300	60 000
FTGTM-4-090650	Gas Flat Top Grill 5 Burner - Table Model	78	900x650x300	100 000

- LPGSA Certified
- Body constructed with Stainless Steel
- 16mm Flat Top Griddle
- Table Model comes with 12mm cooking top
- Uses LPG or Natural Gas
- Extras are dividers, ribbed and lid
- Easy to pull out drip tray to catch fats



GAS GRILL RADIANT

MODEL	DESCRIPTION Boiling Tables	WEIGHT (kg)	DIMENSIONS (L X B X H) mm	HEAT BTU
RGFS-44-4B-070650	Gas Radiant Grill Free Standing - 4 Burner	39	700x650x900	60 000
RGFS-44-6B-086650	Gas Radiant Grill Free Standing - 6 Burner	51	860x650x900	90 000
RGFS-44-8B-110650	Gas Radiant Grill Free Standing - 8 Burner	53	1100x650x900	120 000
RGFS-44-10B-135650	Gas Radiant Grill Free Standing - 10 Burner	63	1350x650x900	150 000
RGFS-44-12B-160650	Gas Radiant Grill Free Standing - 12 Burner	75	1600x650x901	180 000

- LPGSA Certified
- Constructed with Stainless Steel
- Drip Tray to catch fats
- Uses LPG or Natural Gas
- Vents in sheet metal for better flame quality
- Also available in Table Model

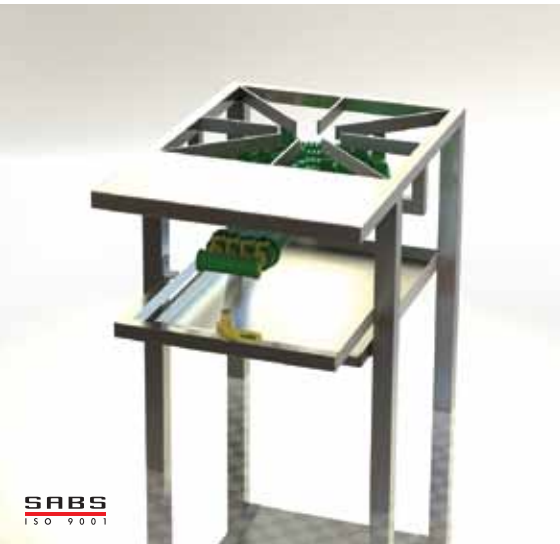




SALAMANDER

MODEL	DESCRIPTION	WEIGHT	DIMENSIONS	HEAT
	Salamander	(kg)	(L X B X H) mm	BTU
SAL-4-GAS	Gas Salamander	59.2	900 x 450 x 580	25000

- Constructed with Stainless Steel
- Quick heating
- Drip Tray to catch fats
- Uses LPG or Natural Gas
- Vents in sheet metal for better flame quality



STOCK POT BOILING TABLE

MODEL	DESCRIPTION	WEIGHT	DIMENSIONS	HEAT
	Stock Pot Boiling Table	(kg)	(L X B X H) mm	BTU
SPBT-44-1B	Gas Stock Pot Boiling Table - 1 Burner	27	500x700x500	92 160
SPBT-44-2B	Gas Stock Pot Boiling Table - 2 Burner	42,6	1000x700x500	184 320
SPBT-44-3B	Gas Stock Pot Boiling Table - 3 Burner	64	1500x700x500	276 480

- 304 Stainless Steel Plate Assembly
- Robust Design
- Uses LPG or Natural Gas
- Stainless Steel Drip Tray



WOK BOILING TABLE

MODEL	DESCRIPTION	WEIGHT	DIMENSIONS	HEAT
	Woks	(kg)	(L X B X H) mm	BTU
WOK 1B 900	Gas 1 Burner Wok Water Cooled (HP)	67	900x850x815	92 160
WOK 3B 1800	Gas 3 Burner Wok Water Cooled (HP x 2/LP x1)	122	1800x850x815	276 480
WOK 5B 2400	Gas 5 Burner Wok Water Cooled (HP x 4/LP x1)	163	2400x850x815	460 800

- Uses LPG on high pressure regulator/line
- Water Cooled Top
- Constructed with 304 Stainless Steel
- High splash back

STAINLESS STEEL DOOR UNDERBAR FRIDGE

SS=STAINLESS STEEL, GD = GLASS

MODEL	DESCRIPTION Plain Top Underbar	WEIGHT (kg)	DIMENSIONS (L X B X H) mm	POWER Watts
UFPTSD-1180-1.5	1.5 SS Doors with one height adjustable shelf per full door	80	1180x650x900	375
UFPTSD-1780-2.5	2.5 SS Doors with one height adjustable shelf per full door	110	1780x650x900	450
UFPTSD-2380-3.5	3.5 SS Doors with one height adjustable shelf per full door	125	2380x650x900	450
UFPTSD-3000-4.5	4.5 SS Doors with one height adjustable shelf per full door	140	3000x650x900	615

MODEL	DESCRIPTION 100mm Splash Back to rear Under Bar	WEIGHT (kg)	DIMENSIONS (L X B X H) mm	POWER Watts
UFSBSD-1180-1.5	1.5 SS Doors with one height adjustable shelf per full door	83	1180x650x900	375
UFSBSD-1780-2.5	2.5 SS Doors with one height adjustable shelf per full door	115	1780x650x900	450
UFSBSD-2380-3.5	3.5 SS Doors with one height adjustable shelf per full door	131	2380x650x900	450
UFSBSD-3000-4.5	3.5 SS Doors with one height adjustable shelf per full door	147	3000x650x900	615

- Self-contained forced-air condensing unit utilising ozone friendly R134A refrigerant with auto evaporating pan.
- Economical and easily replaceable disposable filters on the condenser radiator.
- Digital display controller with splashguard and condenser filter service indicator.
- Angled louvres to deflect the hot air away from the doors.
- Doors: Self-closing with magnetic clip on door gaskets.
- Host of optional extras available - please enquire.





GLASS DOOR UNDERBAR FRIDGE

SS=STAINLESS STEEL, GD = GLASS

MODEL	DESCRIPTION Plain Top Underbar	WEIGHT (kg)	DIMENSIONS (L X B X H) mm	POWER Watts
UFPTGD-1180-1.5	1.5 GD Doors with one height adjustable shelf per full door and light.	85	1180x650x900	375
UFPTGD-1780-2.5	2.5 GD Doors with one height adjustable shelf per full door and light.	120	1780x650x900	450
UFPTGD-2380-3.5	3.5 GD Doors with one height adjustable shelf per full door and light.	140	2380x650x900	450
UFPTGD-3000-4.5	4.5 GD Doors with one height adjustable shelf per full door and light.	160	3000x650x900	615



MODEL	DESCRIPTION (100mm Splash Back to rear Under Bar)	WEIGHT (kg)	DIMENSIONS (L X B X H) mm	POWER Watts
UFSBGD-1180-1.5	1.5 GD Doors with one height adjustable shelf per full door and light.	88	1180x650x900	375
UFSBGD-1780-2.5	2.5 GD Doors with one height adjustable shelf per full door and light.	125	1780x650x900	450
UFSBGD-2380-3.5	3.5 GD Doors with one height adjustable shelf per full door and light.	146	2380x650x900	450
UFSBGD-3000-4.5	4.5 GD Doors with one height adjustable shelf per full door and light.	167	3000x650x900	615

- Self-contained forced-air condensing unit utilising ozone friendly R134A refrigerant with auto evaporating pan.
- Economical and easily replaceable disposable filters on the condenser radiator.
- Digital display controller with splashguard and condenser filter service indicator.
- Angled louvres to deflect the hot air away from the doors.
- Doors: Self-closing with magnetic clip on door gaskets.
- Comes with energy saving LED light
- Host of optional extras available- please enquire.

STAINLESS STEEL DOOR GASTRONORM UNDERBAR FRIDGE

SS=STAINLESS STEEL, GD = GLASS

MODEL	DESCRIPTION	WEIGHT (kg)	DIMENSIONS (L X B X H) mm	POWER Watts
UFPTSD-1350-2.5GN	Plain Top Underbar 2.5 SS Doors with one GN1/1 variable racking systems per full door	92	1350x650x900	375
UFPTSD-1780-3.5GN	3.5 SS Doors with one GN1/1 variable racking systems per full door	128	1780x650x900	450
UFPTSD-2380-4.5GN	4.5 SS Doors with one GN1/1 variable racking systems per full door	149	2380x650x900	450
UFPTSD-3000-5.5GN	5.5 SS Doors with one GN1/1 variable racking systems per full door	170	3000x650x900	615

MODEL	DESCRIPTION	WEIGHT (kg)	DIMENSIONS (L X B X H) mm	POWER Watts
UFSBSD-1350-2.5GN	100mm Splash Back to rear Under Bar 2.5 SS Doors with one GN1/1 variable racking systems per full door	95	1350x650x900	375
UFSBSD-1780-3.5GN	3.5 SS Doors with one GN1/1 variable racking systems per full door	133	1780x650x900	450
UFSBSD-2380-4.5GN	4.5 SS Doors with one GN1/1 variable racking systems per full door	155	2380x650x900	450
UFSBSD-3000-5.5GN	5.5 SS Doors with one GN1/1 variable racking systems per full door	177	3000x650x900	615



GLASS DOOR GASTRONORM UNDERBAR FRIDGE

SS=STAINLESS STEEL, GD = GLASS

MODEL	DESCRIPTION	WEIGHT (kg)	DIMENSIONS (L X B X H) mm	POWER Watts
UFPTGD-1350-2.5GN	Plain Top Underbar 2.5 GD Doors with one GN1/1 variable racking systems per full door and light.	102	1350x650x900	375
UFPTGD-1780-3.5GN	3.5 GD Doors with one GN1/1 variable racking systems per full door and light.	143	1780x650x900	450
UFPTGD-2380-4.5GN	4.5 GD Doors with one GN1/1 variable racking systems per full door and light.	169	2380x650x900	450
UFPTGD-3000-5.5GN	5.5 GD Doors with one GN1/1 variable racking systems per full door and light.	195	3000x650x900	615

MODEL	DESCRIPTION	WEIGHT (kg)	DIMENSIONS (L X B X H) mm	POWER Watts
UFSBGD-1350-2.5GN	100mm Splash Back to rear Under Bar 2.5 GD Doors with one GN1/1 variable racking systems per full door and light.	105	1350x650x900	375
UFSBGD-1780-3.5GN	3.5 GD Doors with one GN1/1 variable racking systems per full door and light.	148	1780x650x900	450
UFSBGD-2380-4.5GN	4.5 GD Doors with one GN1/1 variable racking systems per full door and light.	175	2380x650x900	450
UFSBGD-3000-5.5GN	5.5 GD Doors with one GN1/1 variable racking systems per full door and light.	204	3000x650x900	615

- Self-contained forced-air condensing unit utilising ozone friendly R134A refrigerant with auto evaporating pan.
- Economical and easily replaceable disposable filters on the condenser radiator.
- Digital display controller with splashguard and condenser filter service indicator.
- Angled louvres to deflect the hot air away from the doors.
- Doors: Self-closing with magnetic clip on door gaskets.
- Host of optional extras available - please enquire.



RAISED PIZZA TOP TO REAR UNDERBAR FRIDGE

SS=STAINLESS STEEL, GD = GLASS

MODEL	DESCRIPTION Plain Top Under Bar	WEIGHT (kg)	DIMENSIONS (L X B X H) mm	POWER Watts
UFSTSD-1180-1.5	1.5 SS Doors with one height adjustable shelf -6 inserts 1/6	86	1180 x 650 x 900	375
UFSTSD-1780-2.5	2.5 SS Doors with two height adjustable shelves-10 inserts 1/6	119	1780 x 650 x 900	450
UFSTSD-2380-3.5	3.5 SS Doors with three height adjustable shelves-13 inserts 1/6	137	2380 x 650 x 900	450
UFSTSD-3000-4.5	4.5 SS Doors with four height adjustable shelves-17 inserts 1/6	155	3000 x 650 x 900	615

MODEL	DESCRIPTION Plain Top Under Bar	WEIGHT (kg)	DIMENSIONS (L X B X H) mm	POWER Watts
UFPBGD-1180-1.5	1.5 GD Doors with one height adjustable shelf -6 inserts 1/6	91	1180 x 650 x 900	375
UFPBGD-1780-2.5	2.5 GD Doors with two height adjustable shelves-10 inserts 1/6	129	1780 x 650 x 900	450
UFPBGD-2380-3.5	3.5 GD Doors with three height adjustable shelves-13 inserts 1/6	152	2380 x 650 x 900	450
UFPBGD-3000-4.5	4.5 GD Doors with four height adjustable shelves-17 inserts 1/6	175	3000 x 650 x 900	615

- Self-contained forced-air condensing unit utilising ozone friendly R134A refrigerant with auto evaporating pan.
- Economical and easily replaceable disposable filters on the condenser radiator.
- Digital display controller with splashguard and condenser filter service indicator.
- Angled louvres to deflect the hot air away from the doors.
- Doors: Self-closing with magnetic clip on door gaskets.
- Pizza top is insulated and includes a night cover, inserts are excluded.
- Host of optional extras available - please enquire.



POLAR TOP UNDERBAR

SS=STAINLESS STEEL, GD = GLASS

MODEL	DESCRIPTION Plain Top Under Bar	WEIGHT (kg)	DIMENSIONS (L X B X H) mm	POWER Watts
UFPPTSD-1180-1.5	1.5 SS Doors with one height adjustable shelf -polar top 100mm	88	1180 x 650 x 900	375
UFPPTSD-1780-2.5	2.5 SS Doors with two height adjustable shelf -polar top 100mm	125	1780 x 650 x 900	450
UFPPTSD-2380-3.5	3.5 SS Doors with three height adjustable shelf -polar top 100mm	146	2380 x 650 x 900	450
UFPPTSD-3000-4.5	4.5 SS Doors with four height adjustable shelf -polar top 100mm	167	3000 x 650 x 900	615

- Self-contained forced-air condensing unit utilising ozone friendly R134A refrigerant with auto evaporating pan.
- Economical and easily replaceable disposable filters on the condenser radiator.
- Digital display controller with splashguard and condenser filter service indicator.
- Angled louvres to deflect the hot air away from the doors.
- Doors: Self-closing with magnetic clip on door gaskets.
- Host of optional extras available- please enquire.

SLIDE TOP UNDERBAR

SS=STAINLESS STEEL, GD = GLASS

MODEL	DESCRIPTION	WEIGHT	DIMENSIONS	POWER
	Plain Top Underbar	(kg)	(L X B X H) mm	Watts
UFSTSD-1180-1.0	1 bottom loading SS Door with 1 fixed shelf & 2 sliding lids	83	1180 x 650 x 900	375
UFSTSD-1780-2.0	2 bottom loading SS Doors with 2 fixed shelves & 3 sliding lids	115	1780 x 650 x 900	450
UFSTSD-2380-3.0	3 bottom loading SS Doors with 3 fixed shelves & 4 sliding lids	131	2380 x 650 x 900	450
UFSTSD-3000-4.0	4 bottom loading SS Doors with 4 fixed shelves & 5 sliding lids	147	3000 x 650 x 900	615

- Self-contained forced-air condensing unit utilising ozone friendly R134A refrigerant with auto evaporating pan.
- Economical and easily replaceable disposable filters on the condenser radiator.
- Digital display controller with splashguard and condenser filter service indicator.
- Angled louvres to deflect the hot air away from the doors.
- Loading Doors: Self-closing with magnetic clip on door gaskets.
- Host of optional extras available- please enquire.



UNDERBAR HAMPERS FRIDGE

SS=STAINLESS STEEL, GD = GLASS

MODEL	DESCRIPTION	WEIGHT	DIMENSIONS	POWER
	Plain Top Underbar	(kg)	(L X B X H) mm	Watts
UFHAMSD-1180-1.5	1.5 SS Doors with one height adjustable shelf per full door	80	1180x650x900	375
UFHAMSD-1780-2.5	2.5 SS Doors with one height adjustable shelf per full door	110	1780x650x900	450
UFHAMSD-2380-3.5	3.5 SS Doors with one height adjustable shelf per full door	125	2380x650x900	450
UFHAMSD-3000-4.5	4.5 SS Doors with one height adjustable shelf per full door	140	3000x650x900	615

MODEL	DESCRIPTION	WEIGHT	DIMENSIONS	POWER
	Plain Top Underbar	(kg)	(L X B X H) mm	Watts
UFHAMGD-1180-1.5	1.5 GD Doors with one height adjustable shelf per full door and light.	85	1180x650x900	375
UFHAMGD-1780-2.5	2.5 GD Doors with one height adjustable shelf per full door and light.	120	1780x650x900	450
UFHAMGD-2380-3.5	3.5 GD Doors with one height adjustable shelf per full door and light.	140	2380x650x900	450
UFHAMGD-3000-4.5	4.5 GD Doors with one height adjustable shelf per full door and light.	160	3000x650x900	615



- Self-contained forced-air condensing unit utilising ozone friendly R134A refrigerant with auto evaporating pan.
- Economical and easily replaceable disposable filters on the condenser radiator.
- Digital display controller with splashguard and condenser filter service indicator.
- Angled louvres to deflect the hot air away from the doors.
- Loading Doors: Self-closing with magnetic clip on door gaskets.
- 200mm x 20mm thick food grade Polyethylene cutting board across the front length of the top and cut-outs at the rear for GN inserts specified by the client.
- Host of optional extras available - please enquire.

ICE BIN

MODEL	DESCRIPTION	WEIGHT	DIMENSIONS	STORAGE CAPACITY
	Ice Bin	(kg)	(L X B X H) mm	(kg)
UFSTSD-1180-1.0	Ice Bin - 274 kg (Stainless Steel)	60	1000x750x1000	274
UFSTSD-1780-2.0	Ice Bin - 342 kg (Stainless Steel)	75	1250x750x1000	342

- Door for easy access to ice.
- Magnet door gaskets.
- 430 Stainless Steel, double skinned construction.
- Drain pipe welded in.





SLIDING DOOR CABINET

MODEL	DESCRIPTION Sliding Door Cabinet 650mm	WEIGHT (kg)	DIMENSIONS (L X B X H) mm
CA-4-P-SD-100065	Plain Top Sliding Door Cabinet	61	1000x650x915
CA-4-P-SD-105065	Plain Top Sliding Door Cabinet	63	1050x650x915
CA-4-P-SD-120065	Plain Top Sliding Door Cabinet	70	1200x650x915
CA-4-P-SD-125065	Plain Top Sliding Door Cabinet	75	1250x650x915
CA-4-P-SD-150065	Plain Top Sliding Door Cabinet	89	1500x650x915
CA-4-P-SD-165065	Plain Top Sliding Door Cabinet	94	1650x650x915
CA-4-P-SD-180065	Plain Top Sliding Door Cabinet	98	1800x650x915
CA-4-P-SD-185065	Plain Top Sliding Door Cabinet	105	1850x650x915
CA-4-P-SD-200065	Plain Top Sliding Door Cabinet	113	2000x650x915
CA-4-P-SD-225065	Plain Top Sliding Door Cabinet	115	2250x650x915
CA-4-P-SD-240065	Plain Top Sliding Door Cabinet	122	2400x650x915
CA-4-P-SD-250065	Plain Top Sliding Door Cabinet	126	2500x650x915

- Constructed with Stainless Steel
- Available with splashback
- Shelf inside for extra packing space
- Adjustable feet
- Flush pull handle



NEUTRAL CABINET

MODEL	DESCRIPTION Sliding Door Cabinet / No Doors (Neutral) 650mm	WEIGHT (kg)	DIMENSIONS (L X B X H) mm
CA-4-N-P-100065	Plain Top Cabinet (No Doors)	48	1000x650x915
CA-4-N-P-105065	Plain Top Cabinet (No Doors)	46	1050x650x915
CA-4-N-P-120065	Plain Top Cabinet (No Doors)	46	1200x650x915
CA-4-N-P-125065	Plain Top Cabinet (No Doors)	63	1250x650x915
CA-4-N-P-160065	Plain Top Cabinet (No Doors)	67	1600x650x915
CA-4-N-P-165065	Plain Top Cabinet (No Doors)	72	1650x650x915
CA-4-N-P-180065	Plain Top Cabinet (No Doors)	73	1800x650x915
CA-4-N-P-185065	Plain Top Cabinet (No Doors)	78	1850x650x915
CA-4-N-P-200065	Plain Top Cabinet (No Doors)	84	2000x650x915
CA-4-N-P-225065	Plain Top Cabinet (No Doors)	85	2250x650x915
CA-4-N-P-240065	Plain Top Cabinet (No Doors)	90	2400x650x915
CA-4-N-P-250065	Plain Top Cabinet (No Doors)	93	2500x650x915

- Constructed with Stainless Steel
- Available with splashback
- Shelf inside for extra packing space
- Adjustable feet

GENERAL SHELVING

MODEL	DESCRIPTION Shelving 4 Tier	WEIGHT (kg)	DIMENSIONS (L X B X H) mm
SH-4-4T-085038	Shelving 430 S/S 4 Tier (4 Shelves)	21	850x380x1800
SH-4-4T-085050	Shelving 430 S/S 4 Tier (4 Shelves)	24	850x500x1800
SH-4-4T-115038	Shelving 430 S/S 4 Tier (4 Shelves)	25	1150x380x1800
SH-4-4T-115050	Shelving 430 S/S 4 Tier (4 Shelves)	29	1150x500x1800
MODEL	DESCRIPTION Shelving 4 Tier	WEIGHT (kg)	DIMENSIONS (L X B X H) mm
SH-G-4T-085038	Shelving Galv 4 Tier (4 Shelves)	21	850x380x1800
SH-G-4T-085050	Shelving Galv 4 Tier (4 Shelves)	24	850x500x1800
SH-G-4T-115038	Shelving Galv 4 Tier (4 Shelves)	25	1150x380x1800
SH-G-4T-115050	Shelving Galv 4 Tier (4 Shelves)	29	1150x500x1800

- Constructed with Stainless Steel or Galvanised Steel
- Range of sizes
- Robust design
- Flat pack for shipping and easy to assemble
- Available with extra shelves
- Galvanise design uses 1.2mm gauge for uprights and shelves
- Stainless design uses 1.2mm gauge for uprights and 0.9mm for shelves



SHELVING POT RACK

MODEL	DESCRIPTION Shelving Pot Rack	WEIGHT (kg)	DIMENSIONS (L X B X H) mm
SH-44-PR-1T-090040	Pot Rack Single Stainless Steel	4	900x400
SH-44-PR-1T-120040	Pot Rack Single Stainless Steel	5	1200x400
SH-44-PR-1T-165040	Pot Rack Single Stainless Steel	6	1600x400
SH-44-PR-1T-185040	Pot Rack Single Stainless Steel	7	1800x400
SH-44-PR-1T-225040	Pot Rack Single Stainless Steel	8	2200x400

- Round Tube Stainless Steel used
- Range of sizes
- Robust design



SHELVING WALL MOUNTED

MODEL	DESCRIPTION Shelving Wall Mounted	WEIGHT (kg)	DIMENSIONS (L X B X H) mm
SH-4-WM-1T-090035	Wall Mounted Shelf Single Stainless Steel	6	900x350
SH-4-WM-1T-100035	Wall Mounted Shelf Single Stainless Steel	6	1000x350
SH-4-WM-1T-105035	Wall Mounted Shelf Single Stainless Steel	6	1050x350
SH-4-WM-1T-120035	Wall Mounted Shelf Single Stainless Steel	7	1200x350
SH-4-WM-1T-150035	Wall Mounted Shelf Single Stainless Steel	8	1500x350
SH-4-WM-1T-165035	Wall Mounted Shelf Single Stainless Steel	9	1650x350
SH-4-WM-1T-180035	Wall Mounted Shelf Single Stainless Steel	9	1800x350
SH-4-WM-1T-200035	Wall Mounted Shelf Single Stainless Steel	10	2000x350
SH-4-WM-1T-225035	Wall Mounted Shelf Single Stainless Steel	11	2250x350

- Constructed with Stainless Steel
- Available in single and double tier
- Formed tube used for extra strength





Figure 1



Figure 2



Figure 3



Figure 4



Figure 5



Figure 6

RISER SHELF

MODE	DESCRIPTION Riser Shelf Cold Pass Electric	WEIGHT (kg)	DIMENSIONS (L X B X H) mm
PAC-4-F1PM	Cold Pass figure 1	NA	Per metre
PAC-4-F2PM	Cold Pass figure 2	NA	Per metre
PAC-4-F3PM	Cold Pass figure 3	NA	Per metre
PAC-4-F4PM	Cold Pass figure 4	NA	Per metre
PAC-4-F5PM	Cold Pass figure 5	NA	Per metre
PAC-4-F6PM	Cold Pass figure 6	NA	Per metre

- Constructed with Stainless Steel
- Robust design
- Stainless Steel tubing for strength
- Available in 3 and 4 tier



- Bowls constructed with 304 Stainless Steel
- Drip fillet all round
- Bowl size 500x500x250
- Shelf optional
- Splashback

PREPARATION SINKS

MODEL	DESCRIPTION Preparation Sinks	WEIGHT (kg)	DIMENSIONS (L X B X H) mm
SI-4-PR-S-070	Single Bowl Prep Sink (Bowl Size 500x500x250)	26	700x650x915
SI-4-PR-S-900	Single Bowl Prep Sink (Bowl Size 500x500x250)	30	900x650x915
SI-4-PR-S-120	Single Bowl Prep Sink (Bowl Size 500x500x250)	36	1200x650x915
SI-4-PR-S-165	Single Bowl Prep Sink (Bowl Size 500x500x250)	46	1650x650x915
SI-4-PR-S-165	Double Bowl Prep Sink (Bowl Size 500x500x250)	46	1650x650x915
SI-4-PR-S-185	Double Bowl Prep Sink (Bowl Size 500x500x250)	50	1850x650x915
SI-4-PR-S-225	Double Bowl Prep Sink (Bowl Size 500x500x250)	58	2250x650x915



POT SINKS

MODEL	DESCRIPTION Pot Sinks 650 mm	WEIGHT (kg)	DIMENSIONS (L X B X H) mm
SI-4-PO-S-090	Single Bowl Pot Sink (Bowl Size 600x500x300)	30	900x650x915
SI-4-PO-S-120	Single Bowl Pot Sink (Bowl Size 600x500x300)	36	1200x650x915
SI-4-PO-S-165	Single Bowl Pot Sink (Bowl Size 600x500x300)	46	1650x650x915
SI-4-PO-D-185	Double Bowl Pot Sink (Bowl Size 600x500x300)	50	1850x650x915
SI-4-PO-D-225	Double Bowl Pot Sink (Bowl Size 600x500x300)	58	2250x650x915

- Bowls constructed with 304 Stainless Steel
- Drip fillet all round
- Bowl size 600x500x300
- Shelf Optional
- Splashback

VEG PREP SINKS (COMBINATION)

MODEL	DESCRIPTION Veg Prep Sink (Combination) 650mm	WEIGHT (kg)	DIMENSIONS (L X B X H) mm
SI-4-VP-D-185	Double Bowl Veg Prep Sink (Bowl Size 600/500x600x250/300)	50	1850x650x915
SI-4-VP-D-225	Double Bowl Veg Prep Sink (Bowl Size 600/500x600x250/300)	58	2250x650x915

- Bowls constructed with 304 Stainless Steel
- Bowl size 500x500x250 and 600x500x300
- Extra rack optional
- Drip fillet all round
- Splashback



HANDWASH BASIN

MODEL	DESCRIPTION Veg Prep Sink (Combination) 650mm	WEIGHT (kg)	DIMENSIONS (L X B X H) mm
SI-4-HWB-WM	Wall Mounted Hand Wash Basin	3	530x420
SI-4-HWB-FR	Freestanding Hand Wash Basin	9	530x420x900
SI-4-HWB-KO	Wall Mounted Hand Wash Basin Knee Operated	4	480x440

- Bowls constructed with 304 Stainless Steel
- Wall mounted
- Drip fillet



TABLE TOP PLAIN

MODEL	DESCRIPTION Plain Top Table 750 mm	WEIGHT (kg)	DIMENSIONS (L X B X H) mm
TA-4-P-060065-SG	Plain Top Table with Shelf	22	600x650x915
TA-4-P-084065-SG	Plain Top Table with Shelf	27	840x650x915
TA-4-P-105065-SG	Plain Top Table with Shelf	31	1050x650x915
TA-4-P-120065-SG	Plain Top Table with Shelf	34	1200x650x916
TA-4-P-125065-SG	Plain Top Table with Shelf	35	1250x650x915
TA-4-P-150065-SG	Plain Top Table with Shelf	40	1500x650x915
TA-4-P-165065-SG	Plain Top Table with Shelf	43	1650x650x915
TA-4-P-180065-SG	Plain Top Table with Shelf	46	1800x650x915
TA-4-P-185065-SG	Plain Top Table with Shelf	47	1850x650x915
TA-4-P-225065-SG	Plain Top Table with Shelf	55	2250x650x915

MODEL	DESCRIPTION Plain Top Table 650 mm	WEIGHT (kg)	DIMENSIONS (L X B X H) mm
TA-4-P-060075-SG	Plain Top Table with Shelf	25	600x750x915
TA-4-P-084075-SG	Plain Top Table with Shelf	30	840x750x915
TA-4-P-105075-SG	Plain Top Table with Shelf	34	1050x750x915
TA-4-P-120075-SG	Plain Top Table with Shelf	38	1200x750x916
TA-4-P-125075-SG	Plain Top Table with Shelf	39	1250x750x915
TA-4-P-150075-SG	Plain Top Table with Shelf	45	1500x750x915
TA-4-P-165075-SG	Plain Top Table with Shelf	48	1650x750x915
TA-4-P-180075-SG	Plain Top Table with Shelf	52	1800x750x915
TA-4-P-185075-SG	Plain Top Table with Shelf	64	1850x750x915
TA-4-P-225075-SG	Plain Top Table with Shelf	62	2250x750x915



- Constructed with Stainless Steel
- Square Tubing used for extra strength
- Inner 1.2mm galvanised steel
- Stainless Steel legs
- Collapsible
- Sound Retardant material used between top and inner
- Available extras are stainless steel shelving, slatted shelving etc
- Weight rating for shelf is +-50kg



TABLE SPLASHBACK

MODEL	DESCRIPTION Splash Back Table 650 mm	WEIGHT (kg)	DIMENSIONS (L X B X H) mm
TA-4-S-060065-SG	Splash Back Table with Shelf	24	600x650x915
TA-4-S-084065-SG	Splash Back Table with Shelf	28	840x650x915
TA-4-S-105065-SG	Splash Back Table with Shelf	33	1050x650x915
TA-4-S-120065-SG	Splash Back Table with Shelf	37	1200x650x916
TA-4-S-125065-SG	Splash Back Table with Shelf	38	1250x650x915
TA-4-S-150065-SG	Splash Back Table with Shelf	43	1500x650x915
TA-4-S-165065-SG	Splash Back Table with Shelf	46	1650x650x915
TA-4-S-180065-SG	Splash Back Table with Shelf	50	1800x650x915
TA-4-S-185065-SG	Splash Back Table with Shelf	51	1850x650x915
TA-4-S-225065-SG	Splash Back Table with Shelf	59	2250x650x915

MODEL	DESCRIPTION Splash Back Table 750 mm	WEIGHT (kg)	DIMENSIONS (L X B X H) mm
TA-4-S-060075-SG	Splash Back Table with Shelf	26	600x750x915
TA-4-S-084075-SG	Splash Back Table with Shelf	31	840x750x915
TA-4-S-105075-SG	Splash Back Table with Shelf	36	1050x750x915
TA-4-S-120075-SG	Splash Back Table with Shelf	41	1200x750x915
TA-4-S-125075-SG	Splash Back Table with Shelf	42	1250x750x915
TA-4-S-150075-SG	Splash Back Table with Shelf	48	1500x750x915
TA-4-S-165075-SG	Splash Back Table with Shelf	51	1650x750x915
TA-4-S-180075-SG	Splash Back Table with Shelf	55	1800x750x915
TA-4-S-185075-SG	Splash Back Table with Shelf	54	1850x750x915
TA-4-S-225075-SG	Splash Back Table with Shelf	66	2250x750x915

- Constructed with Stainless Steel
- Square Tubing used for extra strength
- Inner 1.2mm galvanised steel
- Stainless Steel legs
- Sound Retardant material used between top and inner



HOYING TABLE

MODEL	DESCRIPTION Hoisting Table Frame	WEIGHT (kg)	DIMENSIONS (L X B X H) mm
Hoisting	Hoisting Table Frame	21	600x650

- Constructed with Stainless Steel
- Square Tubing used for strength
- Mobile on 75 mm Castors

DUMP TABLES

MODEL	DESCRIPTION Dump Table (Single) 620 mm	WEIGHT (kg)	DIMENSIONS (L X B X H) mm
TA-4-DU-1T-110	Single (1 T) Dump Table	28	1100x620x915
TA-4-DU-1T-160	Single (1 T) Dump Table	36	1600x620x915
TA-4-DU-1T-180	Single (1 T) Dump Table	40	1800x620x915
TA-4-DU-1T-210	Single (1 T) Dump Table	44	2100x620x915

MODEL	DESCRIPTION Dump Table (Double) 620 mm	WEIGHT (kg)	DIMENSIONS (L X B X H) mm
TA-4-DU-2T-110	Double (2 T) Dump Table	49	1100x620x915
TA-4-DU-2T-160	Double (2 T) Dump Table	64	1600x620x915
TA-4-DU-2T-180	Double (2 T) Dump Table	70	1800x620x915
TA-4-DU-2T-210	Double (2 T) Dump Table	80	2100x620x915

MODEL	DESCRIPTION Dump Table 620 mm Mushroom Basket Shelf	WEIGHT (kg)	DIMENSIONS (L X B X H) mm
TA-4-DU-MU-110	Dump Table with Mushroom Basket Shelf	68	1100x620x915
TA-4-DU-MU-160	Dump Table with Mushroom Basket Shelf	84	1600x620x915
TA-4-DU-MU-180	Dump Table with Mushroom Basket Shelf	90	1800x620x915
TA-4-DU-MU-210	Dump Table with Mushroom Basket Shelf	107	2100x620x915

MODEL	DESCRIPTION Dump Table 620 mm Angled Basket Shelf	WEIGHT (kg)	DIMENSIONS (L X B X H) mm
TA-4-DU-A-110	Dump Table with Angled Basket Shelf	50	1100x620x915
TA-4-DU-A-160	Dump Table with Angled Basket Shelf	63	1600x620x915
TA-4-DU-A-180	Dump Table with Angled Basket Shelf	68	1800x620x915
TA-4-DU-A-210	Dump Table with Angled Basket Shelf	78	2100x620x915

- Constructed with Stainless Steel top
- Square Tubing used for strength
- Drip fillet all round



INLET TABLES

MODEL	DESCRIPTION Inlet Table 620 mm	WEIGHT (kg)	DIMENSIONS (L X B X H) mm
SI-4-IN-SB-070	Inlet Sink Table With Splash Guard (Bowl size 450x450x250)	22	700x620x915
SI-4-IN-SB-090	Inlet Sink Table With Splash Guard (Bowl size 450x450x250)	25	900x620x915
SI-4-IN-SB-110	Inlet Sink Table With Splash Guard (Bowl size 450x450x250)	30	1100x620x915
SI-4-IN-SB-160	Inlet Sink Table With Splash Guard (Bowl size 450x450x250)	39	1600x620x915

- Constructed with tainless Steel top
- Square Tubing used for extra strength
- High boxed edge to guide dishwashing baskets





OUTLET TABLE

MODEL	DESCRIPTION Outlet Table 620 mm	WEIGHT (kg)	DIMENSIONS (L X B X H) mm
TA-4-0-070	Outlet Table With 1 Set of Legs	18	700x620x915
TA-4-0-090	Outlet Table With 1 Set of Legs	24	900x620x915
TA-4-0-110	Outlet Table With 1 Set of Legs	32	1100x620x915
TA-4-0-160	Outlet Table With 1 Set of Legs	41	1600x620x915

- Constructed with Stainless Steel top
- Square Tubing used for extra strength
- High boxed edge to guide dishwashing basket



JOCKEY STATION TABLE

MODEL	DESCRIPTION Outlet Table 620 mm	WEIGHT (kg)	DIMENSIONS
TA-4-Jockey-1650	Jockey Station c/w Ice Well, sink Bowl and Speedrail with Shelf or no shelf.	58	1650x650x915
TA-4-Jockey-1800	Jockey Station c/w Ice Well, sink Bowl and Speedrail with Shelf or no shelf.	62	1800x650x915
TA-4-Jockey-2250	Jockey Station c/w Ice Well, sink Bowl and Speedrail with Shelf or no shelf.	72	2250x650x915
TA-4-Jockey-2340	Jockey Station c/w Ice Well, sink Bowl and Speedrail with Shelf or no shelf.	82	2340x650x915

- Has a MB5, Ice Well and Speed rail fitted
- Square tubing used for extra strength



TROLLEYS

MODEL	DESCRIPTION Trolleys	WEIGHT (kg)	DIMENSIONS (L X B X H) mm
TR-4-18SH-600400	18sh GP Trolley Baking Tray 600x400	30	600x400
TR-3-BLOOD	Blood Crate Trolley-S/Steel 304 MBS# trd-91490	9	645x455x180
TR-40-GN 1/1 11SH	GN 1/1 Tray Trolley-11 Tier S/Steel 441-SINGLE	26	600 X 400x1800
TR-40-GN 2/1 11SH	GN 1/1 Tray Trolley-11 Tier S/Steel 441-Double	17	735x530x1800
TR-40-TTR-D-11T	Tuff Tray (400x280) Trolley 11 Tier S/Steel 441-DOUBLE	47	895x600x1800
TR-40-TTR-S-11T	Tuff Tray (400x280) Trolley 11 Tier S/Steel 441-SINGLE	27	460x600x1800
Mobile Dolley	Mobile Dolley for Omega Bin	15	ø 450x168

General Purpose Trolley

- Constructed with 25mm Stainless Steel square tubular frame
- Angle runners from 1.2 mm, Stainless Steel
- Mobile on 130mm castors
- High temperature resistant

Blood Crate Trolley

- Constructed with 304 Stainless Steel tray
- Allows to crate frozen product thaw and drain into tray

GN Trolley

- Constructed with 25mm square tubing Stainless Steel
- Angled runners from Stainless Steel
- Mobile on rubber castors

Tuff Tray Trolley

- Constructed with 25mm square tubing Stainless Steel
- Angled runners from Stainless Steel
- Mobile on rubber castors

Mobile Dolley trolley

- Constructed with Stainless Steel Flat bar
- Mobile on 75mm rubber castors

GENERAL

MODEL	DESCRIPTION	WEIGHT (kg)	DIMENSIONS (L X B X H) mm
GT-3-081051	Grease Trap S/Steel 304 - Free Standing with 2 x Lids & Baskets	42	810x510x450
GT-3-045045	Grease Trap S/Steel 304 - Free Standing with Lids & Baskets	18	450x450x450
IW-3-035035	Ice Well drop in 304 S/S with galv outer	12	350x350x350
IW-3-045035	Ice Well drop in 304 S/S with galv outer	15	450x350x350
GWS-4-225620	Glass Washer Station (Inlet sink and Outlet Table)	62	2250x620x915
GWS-4-620620	Glass Washer Stand with Runners	22	620x620x450
SH-44-BR-056055	Dishwasher Single Basket Rack under to take 3 Baskets	8	560x550x750
SH-44-BR-105055	Dishwasher Double Basket Rack under to take 6 Basket	5	1050x550x750
RAT-99000	Oven Stand S/S with Top (Combi Steam)	41	925x805x750

Grease Traps

- Constructed with 304 Stainless Steel.

Ice Wells

- Constructed with 304 Stainless Steel Drop in.

Glass Washer Station (Inlet sink and outlet Table)

- Constructed with a Stainless Steel Top
- 1.2mm Galvanized Inner
- Stainless Steel Square Tubing used for Strength
- Stainless Steel runners

Glass Washer Stand with Runners

- Constructed with Stainless steel Top
- Stainless Steel Runners

Dishwasher Single Basket Rack under to take 3 Baskets

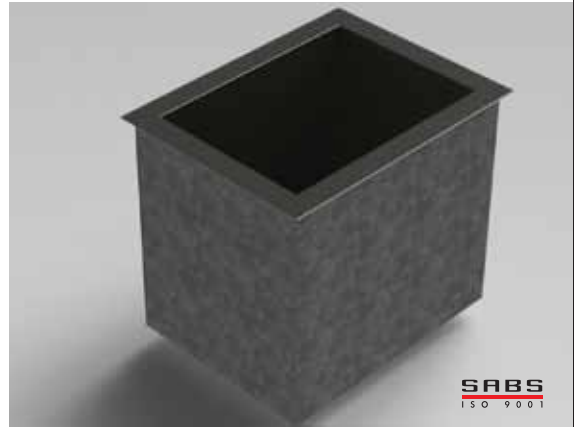
- Constructed with Stainless Steel

Dishwasher Double Basket Rack under to take 6 Baskets

- Constructed with Stainless Steel

Oven Stand S/S with Top (Combi Steam)

- Constructed with 409 Stainless Steel Frame and Runners
- Constructed with 430 Stainless Steel Top.



**ENQUIRE ABOUT METNOR REFRIGERATION AND CATERING EQUIPMENT –
CONCEPT, DESIGN AND MANUFACTURE.**

Grant Norton : CEO
grant@metnor.co.za

Willie Pieters : General Manager
willem@metnor.co.za

Jean Deville : Head of Refrigeration
jean@metnor.co.za

Muhammed Uwaiz Khan : Head of R&D
muhammed@metnor.co.za

Landline: 021-905 2980
Fax: 021-905 2983
Co-ordinates: -33.975223,18.689626
www.metnor.co.za



REFRIGERATION & CATERING EQUIPMENT
MANUFACTURERS

12 Heath Circle, Blackheath, 7580
Tel: 021 905 2980 • Fax: 021 905 2983
Email: info@metnor.co.za
GPS: -33.975223,18.689626
www.metnor.co.za